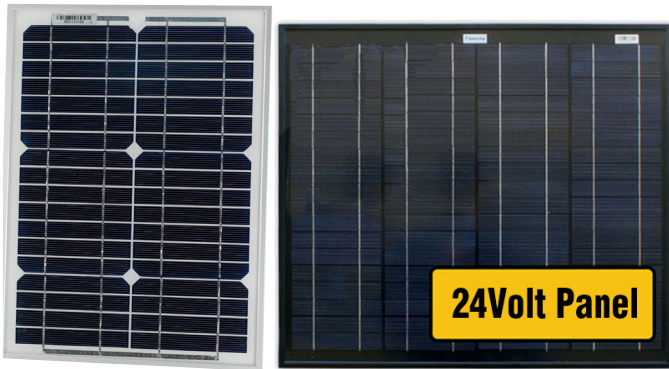


# Solar Panels & Battery Chargers



## DESCRIPTION

Elsema's SP series of solar panels provides you with an eco-friendly solution to supply power. Typical applications include:

- Automatic gates and doors
- Water pumping
- Wireless telemetry
- Lighting and signage
- Transmitter or receiver stand-alone systems

TECHNICAL DATA					24V Panel	
Model	SP5	SP10	SP20	SP40	SP40-24	SP60
Rated Power (Watts)	5 Watts	10 Watts	20 Watts	40 Watts	40 Watts	60 Watts
$V_{mp}$ (Volts)	17.8V	17.8V	17.8V	17.8V	35.5V	17.8V
$I_{mp}$ (Amps)	0.28 A	0.56 A	1.12 A	2.25 A	1.13 A	3.37 A
$V_{oc}$ (Volts)	22.3 V	22.3 V	22.3 V	22.3 V	43.1 V	22.3 V
$I_{sc}$ (Amps)	0.30 A	0.61 A	1.21 A	2.43 A	1.85 A	3.64 A
Dimension (mm)	250 x 185 x 15	415 x 185 x 18	470 x 345 x 25	550 x 505 x 25	670x 570 x 35	770 x 505 x 30
Weight (kg)	0.5	1.0	2.0	3.5	4.6	5.0

## BATTERY CHARGERS

### 10.0 AMPS SOLAR CHARGER WITH MPPT AND BLUETOOTH

PART NO : MPPT 75/10



### 1.2 AMPS CHARGER WITH LED INDICATION

PART NO	BACH12-1200	BACH24-1200
Supply Voltage	12 Volts	24 Volts
Charging Current	1.2 Amps	1.2 Amps

### BATTERY CHARGER WITH REGULATED SUPPLY

PART NO	SUPREG12	SUPREG24
Supply Voltage	12 Volts	24 Volts
Charging Current	0.8 Amps	0.8 Amps
Regulated Output	5 Amps	5 Amps

BATTERY CHARGERS