

# MCI-VSD with ECLIPSE®

Gate and Door Controller with VSD (Variable Speed Drive)



MCI-VSD04



Optional external Push Buttons can be installed on request

## FEATURES

- ) Designed for 240VAC, 3-phase motors
- ) Double or Single motor operation
- ) Eclipse Operating System (EOS)
- ) Motor soft start and soft stop
- ) Instant stop on obstruction
- ) Large 4-line LCD to indicate controllers status and setup instructions
- ) 1-Touch control for easy setup
- ) Profiling using latest intelligent technology
- ) Various inputs, push button, open only, close only, stop, pedestrian and photoelectric beam
- ) Adjustable auto close, obstruction load and pedestrian access
- ) Adjustable lock and courtesy light outputs
- ) Variable photoelectric safety beam functions
- ) 12 Volt DC Output to power accessories
- ) Service counters, password protection, holiday mode and many more features

## DESCRIPTION

The MCI Controller has been specifically designed to control Variable Speed Drives (VSD). Elsema's MCI-VSD kit comes with its own Omron VSD for controlling a 3-phase 240 Volt AC motor. There are 4 different kits available for different motor sizes.

The MCI card only version can also be used to control almost all types of VSD's or even contactors. The relay outputs on the MCI are voltage free contacts, allowing the user to connect it to VSD's Open, Close & Common inputs (Forward, Reverse & Common). It can also be used to operate coils of open and close contactors.

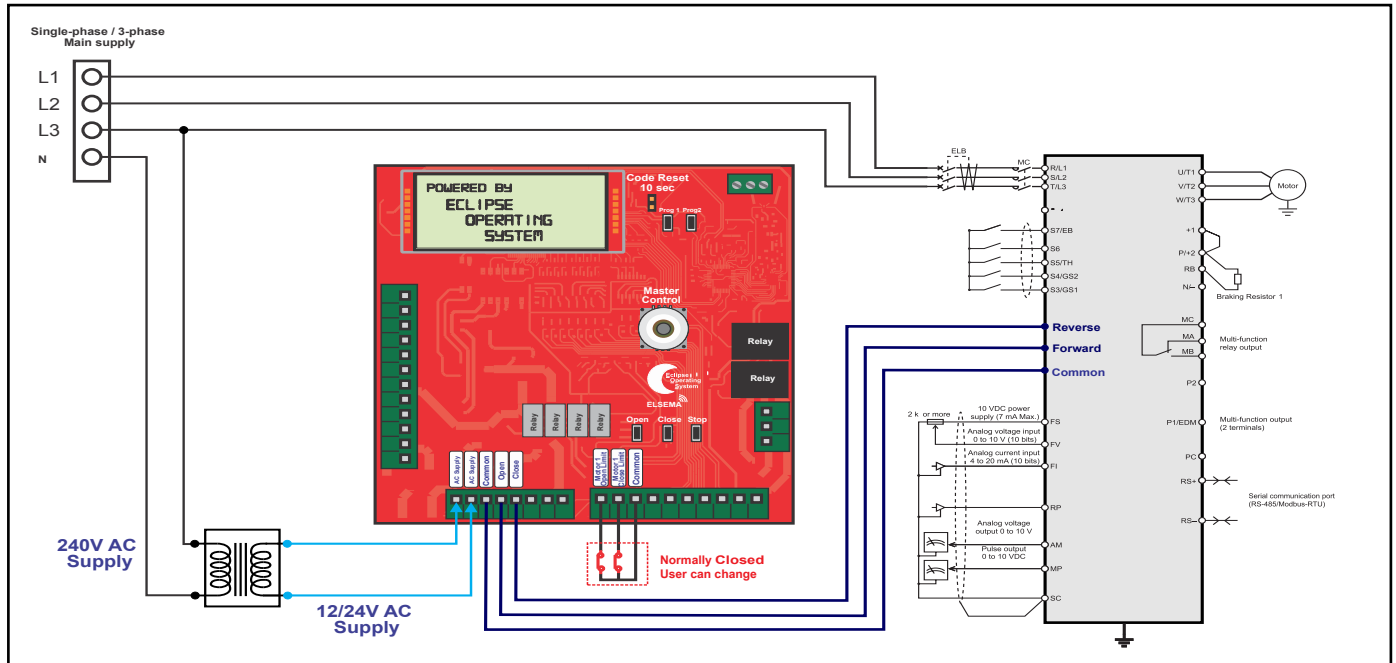
The MCI-VSD kit with Eclipse® Operating System (EOS) automatically does all the confusing and hard to find VSD parameters settings by simply asking the user a few questions. It also gives the user options for more advance settings, where the user can configure each parameter of the VSD. All selections are done in the EOS menu instead of the VSD.

**For detailed technical data visit:**  
[www.elsema.com/automatic-gates/mci](http://www.elsema.com/automatic-gates/mci)

Part Number	Description	Dimension
MCI-VSD04	Suitable for 0.4kW (1/2hp) motor	300x300x150mm
MCI-VSD07	Suitable for 0.75kW (1hp) motor	400x300x200mm
MCI-VSD15	Suitable for 1.5kW (2hp) motor	400x300x200mm
MCI-VSD22	Suitable for 2.2kW (3hp) motor	400x300x200mm

## Variable Speed Drive Output

The Voltage Free outputs are connected to a VSD as shown in the diagram. If 2 VSD's are used, use the VSD 2 output to connect to the second VSD.



## Connecting Contactors

Voltage Free outputs for motor 1 and motor 2 can also be used to control low voltage contactors. See connection diagram below.

