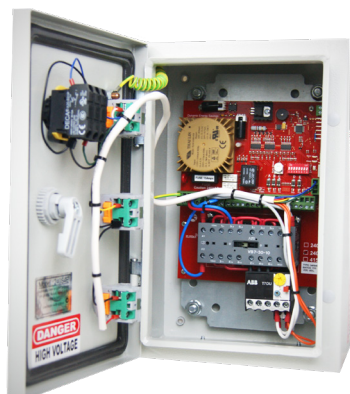


415S1E Series

Controller for 415VAC 3-Phase Motors up to 1.6kW

3-Phase Motors used on Light Commercial Doors, Industrial Roller Shutters, Sectional Doors, Garage and Sliding Doors



415S1E-2.4
OR
415S1E-4.0



With Keyswitch and
Push Buttons

FEATURES

-) Adjustable auto close
-) Auto-reset thermal protection
-) External key switch for safety and security
-) Dead man controls for open and close buttons
-) Automatic ground and travel distance calibration
-) Photocell, pedestrian and wireless remote control inputs
-) Supports NC or NO limit switch inputs or travel timer setup
-) Aux relay output to control courtesy lights and other accessories
-) 24VDC output to supply external accessories such as loop detectors, swipe cards etc
-) Customised models available upon request

DESCRIPTION

The 415S1E industrial controller uses German designed ABB contactors and thermal overloads with phase failure compensation to control the 3-phase motor. The controller uses a dual interlock protection system for extra safety.

Using a toroidal transformer offers the following advantages:

-) Excellent efficiency and low leakage losses reducing your electricity consumption

-) High isolation which protects the electronics from noisy power lines
-) Low magnetic field radiation and no acoustic noise enabling the controller to pass EMC and other stringent radiation tests

This is the quality you should demand when using 3-phase motor controllers.

TECHNICAL DATA

415S1E-2.4: Suitable for 3-phase motors up to 1kW (1.3HP)

415S1E-4.0: Suitable for 3-phase motors up to 1.6kW (2.2HP)

Can be used with NO or NC limit switches

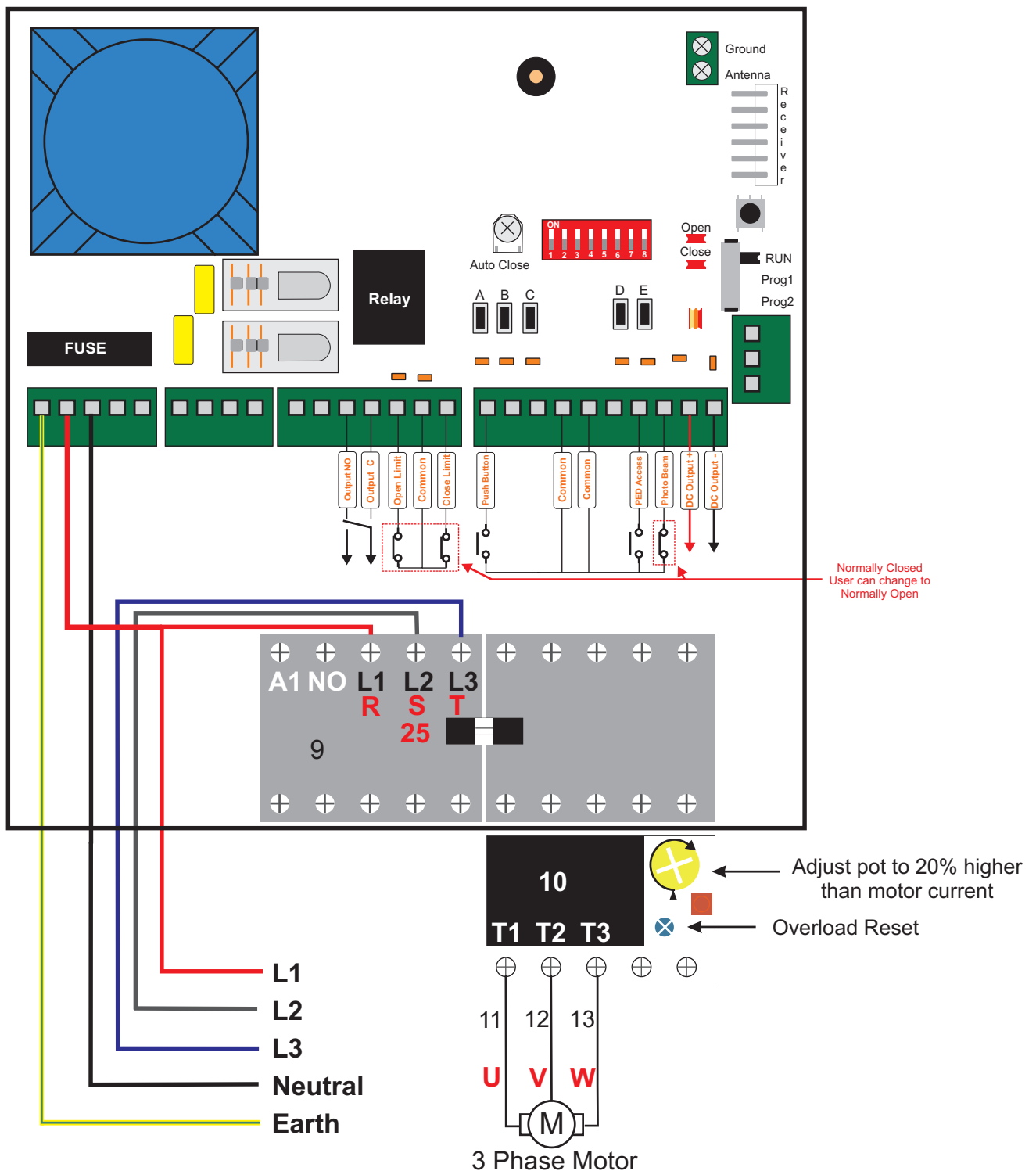
Test buttons for control inputs

Dual interlock for added safety

LEDs indicate when inputs are active. A very handy feature during installation or troubleshooting

For detailed technical data visit www.elsema.com/automatic-gates/415s1

CONNECTION DIAGRAM



In installations where neutral is not available, a 415 to 240 VAC transformer is used to power the control card.

Ordering code for the 415 to 240 VAC transformer is **TT415-30**.