

BLI2 BLIND CONTROLLER

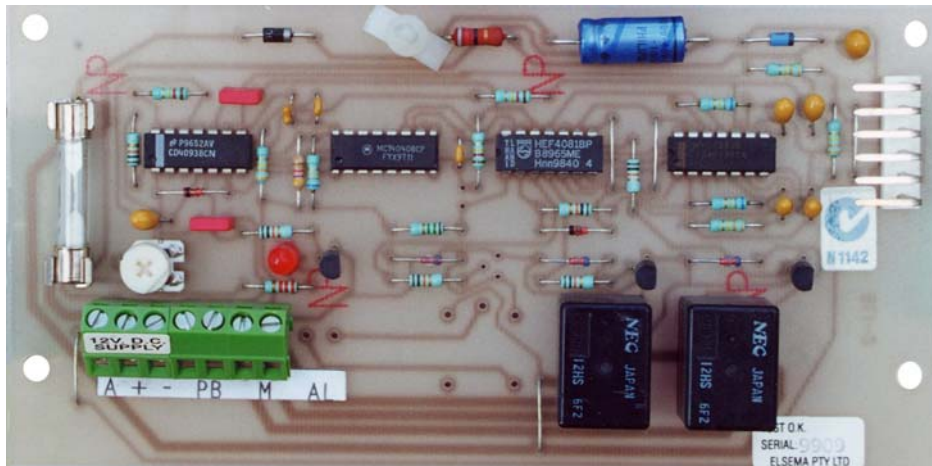
The Blind controller card is used to control the up and down movement of domestic and industrial automatic blinds.

The card is normally used for 12 Volt DC motors with a current rating up to 5 Amps. There is a push button (PB) connection and an option to plug in a receiver for wireless operation.

The receiver can be either the FMR-201 or GLR2701SS. If the FMR-201 is used then any of Elsema's FMT-... series transmitters can be used for wireless operation. If the GLR2701SS is used then any of Elsema's GLT.... series transmitters can be used for wireless operation.

The Blinds travel distance is user selectable by adjusting the PCB trimpot. The trimpot has an adjustment from 2.5 to 90 seconds travel distance.

The Blind controller card has a built-in fuse for safety and a LED to indicate that power is connected to the controller card and it is functioning correctly.



TECHNICAL DATA ON THE BLI2 CONTROLLER

Supply Voltage :	12 Volts DC
Current Consumption :	40mA standby, 70mA if relay on.
Required Supply Current :	Up to 5 Amps. This current rating depends on the current rating of the motor used.
Fuse Rating :	Slow Blow 5 Amps. (8 seconds)
Wireless Control :	Use FMR-201 receiver with FMT-... series transmitters or GLR2701SS with GLT.... series transmitters.
<u>Connections</u>	
Antenna (A) :	50 ohms, 27 MHz CB-Antenna or piece of approximately 1 metre of wire.
Supply (+ -) :	12 Volt DC
Push Button (PB) :	Use normally open contact (NO).
Motor (M) :	Up to 5 Amps motor
(AL) :	This is an alarm output. Used to detect if the blind/shutters are fully closed,
Mounting Holes :	156 X 61 mm
Mounting Hole Size :	5 mm
Dimensions :	167 X 84 mm